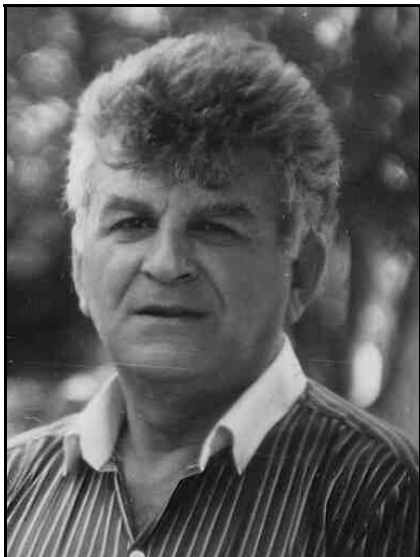


**ABOUT CREATIVITY OF THE GEORGIAN MASTERS**

**IGM JOSIF KRIHELI (1931-1988)**

*by Iuri Akobia (Georgia)*

It is very difficult to remember a chess composer whose creativity had such a wide spectrum of variety as one can see in Josif Kriheli's composing output.



**Josif Kricheli**

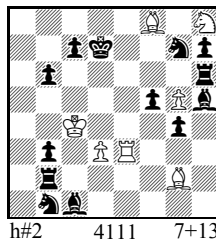
Josif Kriheli was one of the world's most impressive many-sided composers in the last century. He managed to reach masterful heights in almost all genres of chess composition. Unfortunately, the full archive of the composer has not yet been studied and the number of compositions he produced is still unknown. It is also difficult to determine the number of distinctions he received in tournaments. We can only cite the official data, i.e. the published works in FIDE Albums, up to 1988 (the year of his death). There are: 2 twomovers, 5 threemovers, 36 moremovers, 9 endgames and 44 works of other genres (36 helpmates among them).

The Fairy World of Josif Kriheli found a brilliant embodiment in the helpmate genre. His helpmates received enthusiastic superlatives from the tourney judges that might be expressed in a

single laconic word – ingenious! It was not an exaggeration, but a fair tribute to the creativity of the great artist. He was known as the creator of the most complex strategic ideas and tactical combinations, as well as the magician of Miniatures. Kriheli's Miniatures manage to unite Beauty and Fantasy. He was called a classic composer while still alive, and he deserved such a rank!

In his search for interesting and original ideas, Josif showed his other talent – the talent of the scientist. As a result of his research, several articles of fundamental importance were created and published. The following articles brought light into deepest corners of the magical world of chess: "Black half-battery in heterodox problems" ("Problem", No.106-108, 1967), "Reciprocal change in helpmate tempo-strategy" ("Problem", No.112-119, 1968), "Mini-zugzwang" (Shakhmaty, Riga No. 22, 23, 1974). Kriheli's articles presented not only his-own interests in chess composition; they also gave advice and suggestions to other composers.

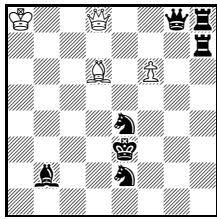
This overview has no pretensions to completeness. However, there is a hope that the selection of his works, presented to the reader, may give a hint about the many-sided creativity of Iosif Kriheli. We shall present only the main genres of his work, and his favorite ones were helpmates and moremovers. His work on endgames was significant, too. If we take the numbers of his problems in FIDE Albums as the most objective measure, there are 36 helpmates and 36 moremovers, compared to 9 endgame studies.



**1. Josif Kricheli**  
*1.pr Shakhmaty 1962*

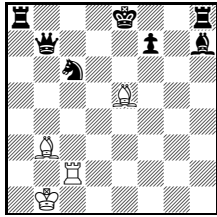
- 1.Rd2 Be4 2.Ke6 Bc6#
- 1.Bd2 Re4 2.Kc6 Rd4#
- 1.Rg6 Re7+ 2.Kd6 Sf7#
- 1.Bg6 Be7 2.Ke8 Bc6#

The first presentation of two pairs of Grimshaw interferences.



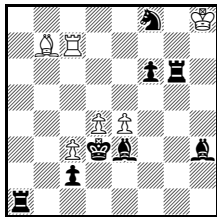
**2. Josif Kricheli**  
 2.pr Probleemblad 1963  
 1.Be5 Bb4 2.Bb8 Qd5 3.Sf2 Bd2#  
 1.Bxf6 Qf8 2.Bd8 Qf1 3.Sd4 Bf4#  
 1.Ba3 Be5 2.Bf8 Qd1 3.Sf4 Bd4#  
 Three beautiful Echo-mates, based on WQ unpinning, in a very light form.

h#3 311... 4+7



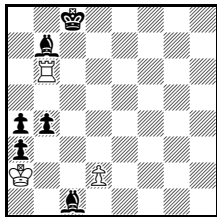
**3. Josif Kricheli**  
 1.pr Problemist 1964  
 1.f5 Rc4 2.0-0 Rg4#  
 1.Sb4 Bc4 2.0-0 Be6#  
 White Grimshaw and black castling in an excellent form.

h#2 2111 4+7



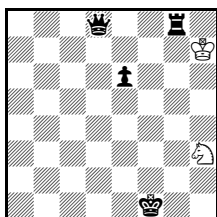
**4. Josif Kricheli**  
 1.pr Shakhmaty 1965  
 1.Bf1 Bc6 2.Kc4 Rc8 3.Bd3 Ba4#  
 1.Rd1 Rc6 2.Kxe4 Ba8  
 3.Rd3 Rxf6#  
 White Grimshaw on c6 and self-blocks on d3.

h#3 211... 6+8



**5. Josif Kricheli**  
 2.pl Kom. pervenstvo SSSR 1966  
 \*1... d4 2.Bf4 d5 3.Bb8 d6  
 4.Ba7 d7+ 5.Kb8 d8=Q#  
 1.Kb8 d4 2.Bf4 d5 3.Bc7 d6  
 4.Ka7 dxc7 5.Ba8 c8=S#  
 Beautiful moremover with promoti-ons of WP to Q and S, excelsior and Model mates.

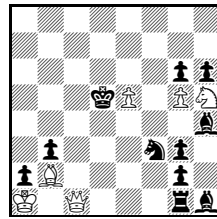
h#5 3+6



**6. Josif Kricheli**  
 1.pr Gazeta Czestochowska 1967  
 1... Sf4 2.Rg3 Sg6 3.Kg2 Kg7  
 4.Kh3 Kh6 5.Qd2+ Kh5 6.Qh2 Sf4#  
 1... Kh6 2.Rg2 Sg5 3.Kg1 Kg6  
 4.Kh2 Kh5 5.Qd1+ Kh4 6.Qh1 Sg3#

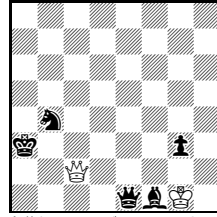
h#5.5 211... 2+4

The Kricheli theme in helpmate moremover. Miniature in the Neuman form, with Echo-play and Chameleon Echo-mates.



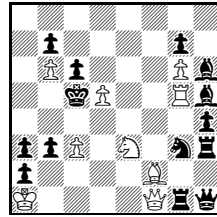
**7. Josif Kricheli**  
 1.pr Priokskaya pravda 1968  
 1.Se1 Qc8 2.hg5 Sf6#  
 1.Sd2 gh6 2.Se4 Sf4#  
 Tempo-strategy of white and black, with Model mates.

h#2 2111 6+11



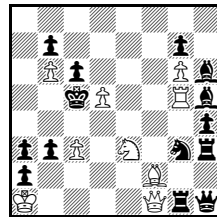
**8. Josif Kricheli**  
 1.pr Probleemblad 1970  
 a) 1.g2 Qxg2 2.Qb1 Kf2  
 3.Kb2 Ke3+ 4.Kc1 Qd2#  
 b) 1.Qc1 Qh2 2.Kb3 Kg2  
 3.Kc2 Kf3+ 4.Kd1 Qe2#  
 Chameleon Echo-mates in a clear-cut mechanism of Echo-play. A minimal Miniature.

h#4 b) ♠f1 2+5



**9. Josif Kricheli**  
 1.pl WCCT 1967-71  
 1.Bd1 Qa6 2.Qxd5 Sc4#  
 1.Bf3 d6+ 2.Bd5 Sf5#  
 The theme condition of the match was to present the same strategy of white and black in different phases. The complex strategy involves battery mates with pins on d5, unpin, decoy, and a critical move.

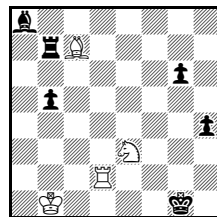
h#2 2111 9+14



**9. Josif Kricheli**  
 1.pl WCCT 1967-71  
 1.Bd1 Qa6 2.Qxd5 Sc4#  
 1.Bf3 d6+ 2.Bd5 Sf5#  
 The theme condition of the match was to present the same strategy of white and black in different phases. The complex strategy involves battery mates with pins on d5, unpin, decoy, and a critical move.

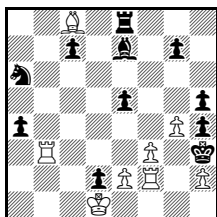
h#2 2111 9+14

Most of Kricheli's moremovers belong to the Logical school:



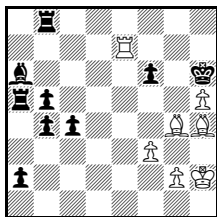
**11. Josif Kricheli**  
 1.pr Probleemblad 1972  
 1.Bh2+ Kh1 2.Bd6 Kg1  
 3.Rg2+ Kh1 4.Re2 Kg1 5.Bh2+ Kh1  
 6.Bf4 Kg1 7.Rg2+ Kh1  
 8.Rf2 Kg1 9.Rf1#

#9 4+6



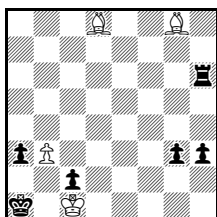
#8 8+11

- 12. Josif Kricheli**  
*1.pr Petrov MT 1976*  
 1.Rc3? Rxc8!; 1.Bf5? g6! 2.Rc3 Bb4 3.Rd3 Rd8!  
**1.Bd7 Rd8 2.Be6 Rd6 3.Bf5 Rf6** (3...g6 4.Rc3 Rd3 5.exd3 Be5 6.d4 Bxd4 7.Bd3) **4.Rc3 Bb4 5.Rd3 Sc5 6.Re3 Rxf5 7.f4+ Kxg4 8.h3#**



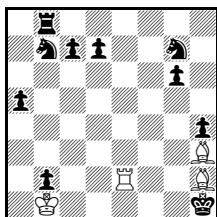
#13 7+9

- 13. Josif Kricheli**  
*1.pr Schach-Echo 1977*  
 1.Bf2? Ra3!; 1.Be1? Rd8!  
**1.Bg3 Kg5 2.Rg7+ Kh6 3.Rd7 Kg5 4.Bh4+ Kh6** (4...Kxh4 5.Rg7) **5.Be1 c3 6.Bg3** (6.Bf2? Re8!) **6...Kg5 7.Rg7+ Kh6 8.Re7 Kg5 9.Bh4+ Kh6 10.Bf2 Rg8 11.Be3+ Rg5 12.Bf5 a1Q 13.Rh7#**



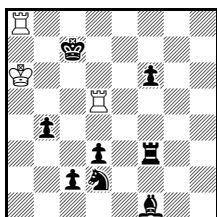
#9 4+6

- 14. Josif Kricheli**  
*1.pr The Northwest Chess 1977*  
**1.Be7** (threat 2.Be5+ Ka2 b4) **1...Rh5 2.Bb6 Rh4 3.Ba5 Rg4 4.Bd5!** (4.Bf7? Rf4! ili 4.Be6? Re4!, and if 4. Bc3+ Ka2 5.Bd5 Rb4 6.Bxb4 h2!) **4...Rg5 5.Bc3+ Ka2 6.Be6 Rg6 7.Bf7 Rg7 8.Bxg7 h2 9.b4#**



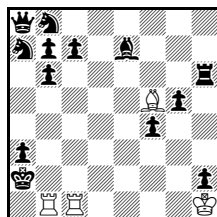
#9 4+10

- 15. Josif Kricheli**  
*1.pr FPG-100 1978*  
 1.Bf4? Re8!  
**1.Be5 Kg1 2.Rg2+ Kh1** (2...Kf1 3.Bd4) **3.Rd2 Kg1 4.Bh2+ Kh1 5.Bf4 Kg1 6.Be3+ Kh1 7.Bxd7 Sd8 8.Bg4 ~ 9.Bf3#**



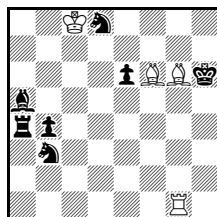
#7 3+8

- 16. Josif Kricheli**  
*1.p The Northwest Chess 1979*  
 1.Rdd8? Bh3!  
**1.Ra7+ Kc8 2.Rh5 Rh3 3.Rc5+ Kd8** (3...Kb8 4.Rb7+) **4.Rd5+ Kc8** (4...Ke8 5.Rb5) **5.Ra8+ Kc7 6.Rdd8 c1Q 7.Rac8#**



#7 4+13

- 17. Josif Kricheli**  
*1.pr Olimpijski turnir 1982*  
 1.Re1? Rc6!; 1.Be4, Rd6!  
**1.Bc2 Rh3 2.Bg6 Rh7 3.Be4 c6 4.Bf5 Rh6 5.Re1 f3 6.Be2 Sb5 7.Bb3#**

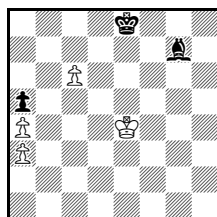


#9 4+7

- 18. Josif Kricheli**  
*1-2.pr Gebelt-70 JT 1984*  
 1.Be8? Ra1!  
**1.Bb1 Kh5 2.Be7** (threat 3.Bg6+ Kh6 4.Bf6#)  
**2...Kh6 3.Rg6+ Kh5 4.Rg3 Kh6 5.Bf6 Kh5 6.Bg6+ Kh6 7.Be8 Kh7 8.Rh3+ Kg8 9.Rh8#**

At about the same time, Iosif Kriheli simultaneously began trying his hand at problems and studies. Although his “pro-blemists soul” took a lead, his achievements in the art of endgames are significant, too. His endgames (around 180) clearly express the specific style of the author. His favorite themes, stalemate and positional draw, illustrate the author’s interest in the “psychology of the weaker side”. Most of his endgames do not present “outside effects”. In them, an internal tension is felt, and the logic of play is based on precise calculation. Many of his studies reveal masterful finishing and a delicate taste. Yes, the fine taste in all genres was essential for the inner world of Josif Kriheli.

It is necessary to note, that the selected studies may not quite meet the requirements of our readers. However, the time at which they were composed should be taken in consideration. Above all, it is perfectly clear how carefully the author treated the purity of his endgames. Nowadays – unfortun-ately – such an attitude can rarely be found.

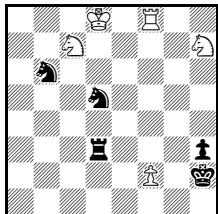


= 4+3

- 19. Josif Kricheli**  
*5.pr Shakhmaty v SSSR 1954*

**1.Kd5** and with:

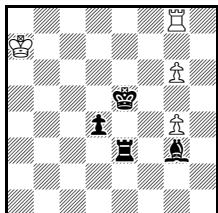
- A) 1...Bf8 2.Kc4 Bd6 [2...Bxa3 3.Kb5 Bb4 4.Kb6 Kd8 5.Kb7 Bd6 6.Kb6 Bc7+ 7.Kb7] 3.Kb5 Bc7 4.Ka6 Ke7! 5.Ka7! Ke8 6.Ka6 Ke7 7.Ka7 Kd6 8.Kb7 Bd8 9.Kc8 Bb6 10.Kb7 Bc7 11.Ke8! Kxc6 stalemate;  
 B) 1...Kd8 2.Kc5! Ke7 3.Kb5 Bc3 4.Kc5 Kb8 5.Kb6! [5.Kb5? Ka7! 6.Kc4 Bd2 7.Kb5 Be1 8.Kc5 Ka6 9.Kd6 Kb6] 5...Be1 6.Ka6 Kc7 7.Kb5 Bd2 8.Kc5 Be3+ 9.Kb5 Bb6 10.Ka6! Kxc6 stalemate.



20. Josif Kricheli  
 1.pr Achalgazdra  
 Kommunisti 1955

= 5+5

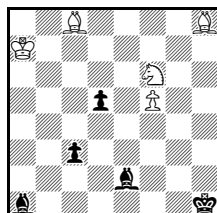
- 1.Sg5 Sf6+ 2.Ke7 Sh7! 3.Sxh7 [3.Sf3+? Kg2 4.Rg8+ Kxf2! 5.Sh2 Rd7+ 6.Ke8 Rxc7-] 3...Rd7+ 4.Ke8! [4.Ke6? Rxh7 5.Se8 Kg2-+] 4...Rxh7 5.Se6 Sd5! [5...Kgl 6.Sg5 h2 7.Sf3+ Kg2 8.Sxh2=] 6.Sg5 Kg2 7.Sxh3! Sc7+ 8.Kd8 Se6+ 9.Ke8 Sxf8 10.Sf4+! Kf3 11.Se6! Sxe6 stalemate



21. Josif Kricheli  
 1.pr Problemista 1967

= 4+4

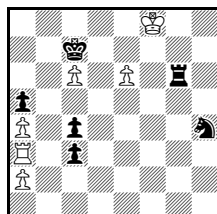
- 1.g7 [1.Rd8? Rc3! 2.Kb7 Ke4! (2...Kf6? 3.g7 Kxg7 4.Rxd4=) 3.Rd7 Be5 4.g7 Bxg7 5.Rxg7 d3-+; 1.g5? Kf5 2.Kb6 Kxg5-+] 1...Kf6 2.g5+! [2.Rd8? Kxg7 3.Rd7+ Kg6 4.Rxd4 Bf2] 2...Kf7 [2...Kg6 3.Rd8 Re7+ 4.Ka6 Rxg7 5.Rxd4=; 2... Kxg5 3.Rd8 Re7+ 4.Ka6 Rxg7 5.Rxd4=] 3.Rd8 Kxg7 [3...Ra3+ 4.Kb7!.Kxg7 5.Rxd4=] 4.Rd7+! Kg8 5.Rd8+! Kg7 6.Rd7+ positional draw, or 6...Kg6 and now the wP is blocked so White can play for a stalemate 7.Rxd4! Bf2 8.Rb4! Rb3+ 9.Ka8! Rxb4 stalemate.



22. Josif Kricheli  
 1.pr USCF Ty  
 Chess Life & Review  
 1972

= 5+5

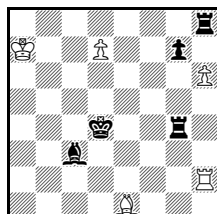
- 1.Se4! [1.Bg7? c2 2.Bh6 Bxf6 3.Bb7 Bd4+ 4.Kb8 Bf3-+] 1...dxe4 2.Bb7 Bf3 [2...Bd3 3.f6 c2 4.f7 c1Q 5.f8Q Kg1 6.Ka8 Bxh8 7.Qxh8 Qa3+ 8.Kb8=] 3.f6 c2 4.f7 Bxh8 5.Bxe4 Bxe4 6.f8Q Bd4+ 7.Kb8 with:  
 A) 7...c1Q 8.Qf3+! Bxf3 stalemate;  
 B) 7...Be5+ 8.Ka7 Bd4+ 9.Kb8 positional draw.



23. Josif Kricheli  
 2.pr Bulgaria-1300  
 JT 1982

= 6+6

- 1.e7! Rf6+ 2.Kg7 Re6 3.Kf7 Rxe7+ 4.Kxe7 Sf5+ 5.Ke6! [5.Kf7? Sd6+ 6.Ke6 Se4-+] 5...Sd4+ 6.Kd5 Sb3! 7.Kxc4 [7.axb3? c2 8.Ra1 cxb3-+] 7...c2 8.Kxb3 with:  
 A) 8...c1Q stalemate, or 8...c1R 9.Kb2=  
 B) 8...c1B!! 9.Kc4! Bxa3 10.Kb5 Bb4 11.a3 Be1 12.Kc5 [12.Ka6? Kxc6 13.Ka7 Kc5] 12...Bf2+ [12... Bd2 13.Kb5 Be1 14.Kc5=] 13.Kb5 Be1 14.Kc5 Bf2+ 15.Kb5 Bb6 16.Ka6 Kxc6 stalemate.



24. Josif Kricheli  
 1.pr Themes-64 1982

= 5+5

- 1.Rh4! [1.Rc2? Rd8 2.Bxc3+ Kd3 3.Rc1 gxh6 4.Kb6 Rxd7-+; 1.Ra2? gxh6 2.Ra4+ Kd5 3.Rxg4 Bxe1 4.Kb7 Rd8 5.Rg7 Bg3 6.Rh7 Bf4-+] 1...Rxh4 2.Bxh4 g5 3.Bxg5 Rh7 4.Bf6+ Kc4 [4...Kd3 5.Bg7 Bxg7 6.d8Q+ Bd4+ 7.Ka6 Rxh6+=] 5.Bg7 Bxg7 6.d8Q Bf6+ 7.Ka6 Bxd8 stalemate.

